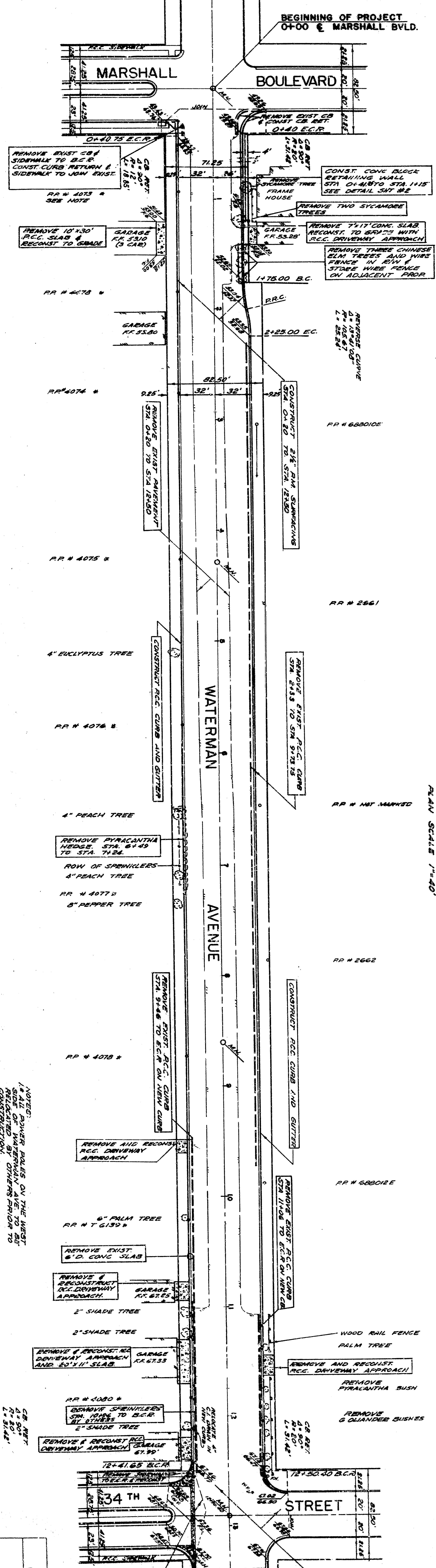


NOTES:

- ALL POWER POLES ON THE RIGHT SIDE OF THE STREET TO BE RELOCATED TO THE LEFT SIDE OF THE STREET BY OTHERS PRIOR TO CONSTRUCTION.
- STREET SIGNS TO BE RELOCATED AS DIRECTED BY ENGINEER IN THE FIELD.
- ADJUST ALL SEWER MAINS TO GRADE.
- ALL WORK TO BE DONE IN ACCORDANCE WITH THE SPECIFICATIONS OF THE STATE OF CALIFORNIA, DEPARTMENT OF PUBLIC WORKS, DIVISION OF HIGHWAYS DATED AUGUST 1984, TO BE CONSULT PER CITY OF SAN BERNARDINO COUNTY.
- CONSTRUCTION SHALL BE IN ACCORDANCE WITH THE CITY OF SAN BERNARDINO SPECIFICATIONS.

NESTE, PAK & ASSOCIATES
 CONSULTING CIVIL ENGINEERS
 235 5th St. San Bernardino, Cal.
 REGISTERED CIVIL ENGINEER

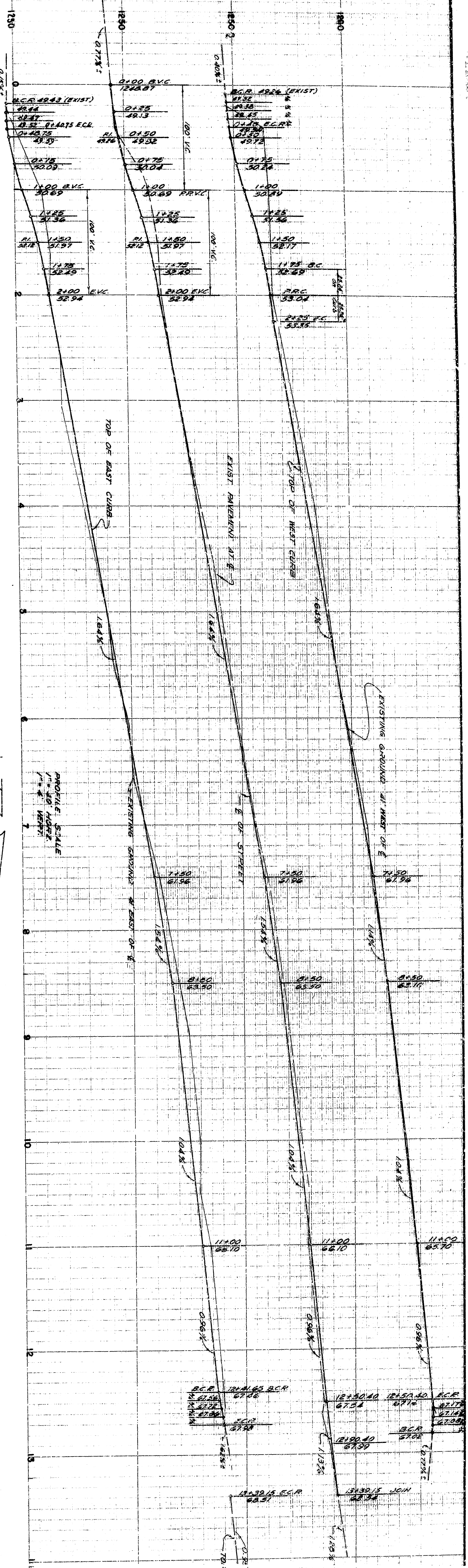
DEPARTMENT OF
CITY OF SAN BERNARDINO
 WATERMAN AVENUE SURFACING



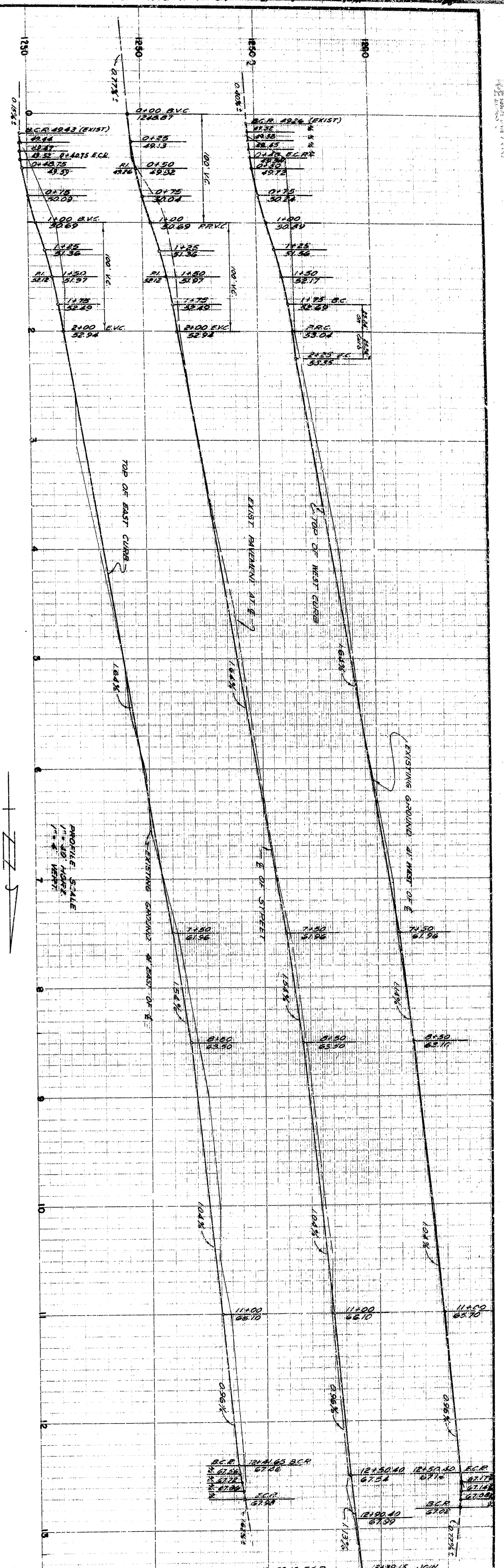
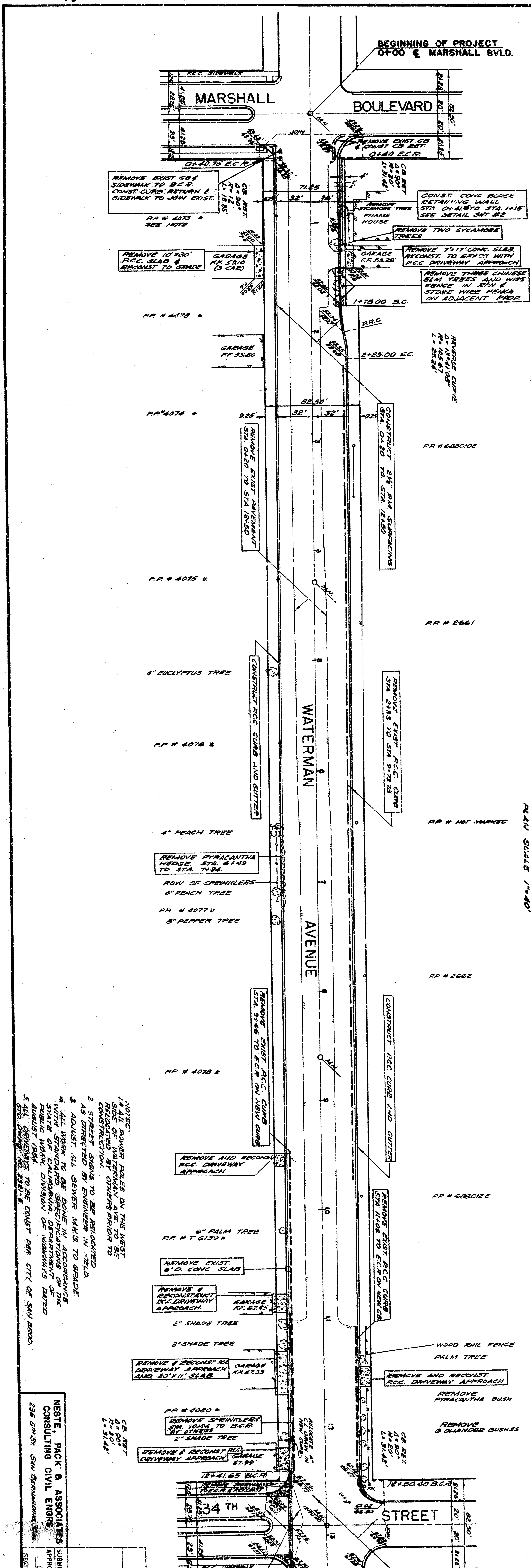
- NOTES:
1. ALL POWER POLES ON THE RIGHT SIDE OF THE STREET TO BE RELOCATED TO OTHER SIDE TO CONSTRUCTION.
 2. STREET SIGNS TO BE RELOCATED AS DIRECTED BY ENGINEER IN FIELD.
 3. ADJUST ALL SEWER MAINS TO GRADE.
 4. ALL WORK TO BE DONE IN ACCORDANCE WITH THE SPECIFICATIONS OF THE STATE OF CALIFORNIA, DEPARTMENT OF PUBLIC WORKS, DIVISION OF HIGHWAYS DATED AUGUST 1988, TO BE CONSISTENT WITH CITY OF SAN ANTONIO, STD. SPECIFICATIONS, EDITION 1992.

NESTE, PACK & ASSOCIATES
 CONSULTING CIVIL ENGINEERS
 235 SAN ANTONIO ST. SAN ANTONIO, TEXAS 78205
 REGISTERED CIVIL ENGINEER
 No. 10345

CITY OF SAN ANTONIO
 DEPARTMENT OF PUBLIC WORKS
 WATERMAN
 SURFACING



CIVIL ENGINEER
 REGISTERED CIVIL ENGINEER
 No. 10345
 STATE OF TEXAS
 EXPIRES 12/31/2024



NOTES:
 1. ALL POWER POLES ON THE WEST SIDE OF WATERMAN AVENUE TO BE RELOCATED BY THE UTILITY COMPANY PRIOR TO CONSTRUCTION.
 2. STREET SIGNS TO BE RELOCATED AS DIRECTED BY ENGINEER IN THE FIELD.
 3. ADJUST ALL SEWER MAINS TO GRADE.
 4. ALL WORK TO BE DONE IN ACCORDANCE WITH THE STANDARD SPECIFICATIONS OF THE STATE OF CALIFORNIA, DEPARTMENT OF PUBLIC WORKS, DIVISION OF HIGHWAYS DATED AUGUST 1954, TO BE CONSISTENT WITH THE CITY OF SAN BERNARDINO STANDARD SPECIFICATIONS FOR CONSTRUCTION OF SANITARY SEWER SYSTEMS.
 5. ALL DRIVEWAYS TO BE RECONSTRUCTED TO CONFORM WITH THE CITY OF SAN BERNARDINO STANDARD SPECIFICATIONS FOR CONSTRUCTION OF DRIVEWAYS AND APPROACHES.
 6. ALL DRIVEWAYS TO BE RECONSTRUCTED TO CONFORM WITH THE CITY OF SAN BERNARDINO STANDARD SPECIFICATIONS FOR CONSTRUCTION OF DRIVEWAYS AND APPROACHES.
 7. ALL DRIVEWAYS TO BE RECONSTRUCTED TO CONFORM WITH THE CITY OF SAN BERNARDINO STANDARD SPECIFICATIONS FOR CONSTRUCTION OF DRIVEWAYS AND APPROACHES.
 8. ALL DRIVEWAYS TO BE RECONSTRUCTED TO CONFORM WITH THE CITY OF SAN BERNARDINO STANDARD SPECIFICATIONS FOR CONSTRUCTION OF DRIVEWAYS AND APPROACHES.
 9. ALL DRIVEWAYS TO BE RECONSTRUCTED TO CONFORM WITH THE CITY OF SAN BERNARDINO STANDARD SPECIFICATIONS FOR CONSTRUCTION OF DRIVEWAYS AND APPROACHES.
 10. ALL DRIVEWAYS TO BE RECONSTRUCTED TO CONFORM WITH THE CITY OF SAN BERNARDINO STANDARD SPECIFICATIONS FOR CONSTRUCTION OF DRIVEWAYS AND APPROACHES.
 11. ALL DRIVEWAYS TO BE RECONSTRUCTED TO CONFORM WITH THE CITY OF SAN BERNARDINO STANDARD SPECIFICATIONS FOR CONSTRUCTION OF DRIVEWAYS AND APPROACHES.
 12. ALL DRIVEWAYS TO BE RECONSTRUCTED TO CONFORM WITH THE CITY OF SAN BERNARDINO STANDARD SPECIFICATIONS FOR CONSTRUCTION OF DRIVEWAYS AND APPROACHES.
 13. ALL DRIVEWAYS TO BE RECONSTRUCTED TO CONFORM WITH THE CITY OF SAN BERNARDINO STANDARD SPECIFICATIONS FOR CONSTRUCTION OF DRIVEWAYS AND APPROACHES.
 14. ALL DRIVEWAYS TO BE RECONSTRUCTED TO CONFORM WITH THE CITY OF SAN BERNARDINO STANDARD SPECIFICATIONS FOR CONSTRUCTION OF DRIVEWAYS AND APPROACHES.
 15. ALL DRIVEWAYS TO BE RECONSTRUCTED TO CONFORM WITH THE CITY OF SAN BERNARDINO STANDARD SPECIFICATIONS FOR CONSTRUCTION OF DRIVEWAYS AND APPROACHES.
 16. ALL DRIVEWAYS TO BE RECONSTRUCTED TO CONFORM WITH THE CITY OF SAN BERNARDINO STANDARD SPECIFICATIONS FOR CONSTRUCTION OF DRIVEWAYS AND APPROACHES.
 17. ALL DRIVEWAYS TO BE RECONSTRUCTED TO CONFORM WITH THE CITY OF SAN BERNARDINO STANDARD SPECIFICATIONS FOR CONSTRUCTION OF DRIVEWAYS AND APPROACHES.
 18. ALL DRIVEWAYS TO BE RECONSTRUCTED TO CONFORM WITH THE CITY OF SAN BERNARDINO STANDARD SPECIFICATIONS FOR CONSTRUCTION OF DRIVEWAYS AND APPROACHES.
 19. ALL DRIVEWAYS TO BE RECONSTRUCTED TO CONFORM WITH THE CITY OF SAN BERNARDINO STANDARD SPECIFICATIONS FOR CONSTRUCTION OF DRIVEWAYS AND APPROACHES.
 20. ALL DRIVEWAYS TO BE RECONSTRUCTED TO CONFORM WITH THE CITY OF SAN BERNARDINO STANDARD SPECIFICATIONS FOR CONSTRUCTION OF DRIVEWAYS AND APPROACHES.

NESTÉ, PACK & ASSOCIATES
 CONSULTING CIVIL ENGINEERS
 238 5TH ST. SAN BERNARDINO, CALIF.
 REGISTERED CIVIL ENGINEERS
 238 5TH ST. SAN BERNARDINO, CALIF.
 REGISTERED CIVIL ENGINEERS

CITY OF SAN BERNARDINO
 DEPARTMENT OF PUBLIC WORKS
 DIVISION OF HIGHWAYS
 PROJECT NO. 100-1234
 SHEET NO. 100-1234-A